



INTERNATIONAL ARCHITECTS ATELIER

912 BROADWAY BLVD, SUITE 300 | KANSAS CITY, MO 64105

P: 816.471.6522 | F: 816.471.3755 | W: I-A.COM

MISSOURI STATE CERTIFICATE OF AUTHORITY #00582

MEP CONSULTANT

IMEG, CORP.
1400 BALTIMORE AVE., SUITE 300
KANSAS CITY, MO 64108
PH: 816.842.8437

FOOD SERVICE DESIGN CONSULTANT

RICCA DESIGN STUDIOS
5613 DTC PARKWAY, SUITE 100
GREENWOOD VILLAGE, CO 80111
PH: 303.221.0500

AUDIOVISUAL DESIGN CONSULTANT

IMEG, CORP.
8900 KEYSTONE CROSSING, SUITE 210
INDIANAPOLIS, IN 46240
PH: 317.848.5045

STRUCTURAL CONSULTANT

BOB D. CAMPBELL & CO.
4338 BELLEVUE AVE.
KANSAS CITY MO 64111
PH: 816.531.4144



UNIFIED
GOVERNMENT
MEMORIAL HALL
KITCHEN &
AUDIO/VISUAL
RENOVATIONS
ISSUED FOR BID

600 N. 7TH ST TRFY
KANSAS CITY, KANSAS 66101

DATE: 03/27/2025

PROJ. NO.: B41456

DESIGNED BY: ST, IC

DRAWN BY: IC

CHECKED BY: ST

APPROVED BY: MA

SCALE:



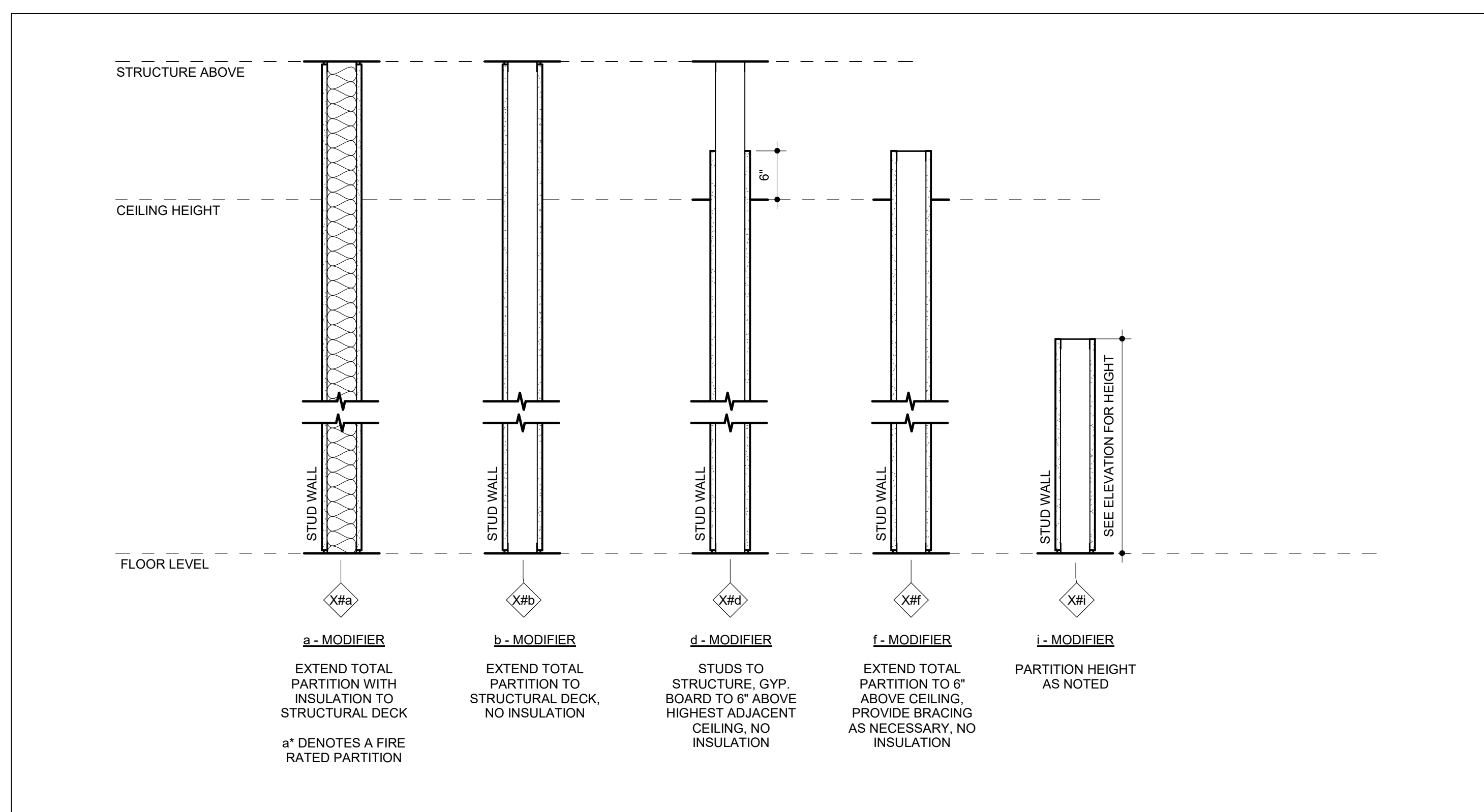
The Professional Architect's seal affixed to this sheet applies only to the material and items shown on this sheet. All drawings, instruments, or other documents not exhibiting this seal shall not be considered prepared by this architect, and this architect expressly disclaims any and all responsibility for such plans, drawings, or documents not exhibiting this seal.

NO.	REVISION	SUBMISSION	DATE
0	ISSUED FOR BID		03/27/2025
1	ADDENDUM #1		04/11/2025

WALL TYPES

A001

© 2025 INTERNATIONAL ARCHITECTS ATELIER



- A. PARTITION TYPES SHOW GENERAL REQUIREMENTS FOR PARTITIONS. REFER TO SPECIFICATIONS, PRODUCT TECHNICAL DATA, AND REQUIREMENTS OF APPLICABLE TESTING AGENCIES FOR SPECIFICS OF PARTITION CONSTRUCTION REQUIREMENTS.**
- B. PARTITION REQUIREMENTS SHOWN ARE MINIMUM STANDARDS. WHERE ACTUAL CONDITIONS CAUSE PARTITION(S) TO EXCEED LIMITS, REINFORCE PARTITION(S) AS REQUIRED.**
- C. MINIMUM STC RATINGS INDICATED ARE BASED ON PARTITION TYPES WITH "a" MODIFIER ONLY. AT ACoustic-RATED PARTITIONS (STC), PROVIDE CONTINUOUS BEAD OF ACUSTICAL SEALANT AT JUNCTURE OF BOTH FACES OF RUNNERS OR PLATES WITH FLOOR AND CEILING CONSTRUCTION, AND WHEREVER GYPSUM BOARD ABUTS DISSIMILAR MATERIALS.**
- D. AT OPENINGS AND CUTOUTS, FILL OPEN SPACES BETWEEN GYPSUM BOARD AND FIXTURES, CABINETS, DUCTS, AND OTHER FLUSH OR PENETRATING ITEMS WITH CONTINUOUS BEAD OF SEALANT.**
- a. SEAL SIDES AND BACKS OF ELECTRICAL BOXES TO COMPLETELY CLOSE OFF OPENINGS AND JOINTS.**
- b. FILL EACH JOINT AND PENETRATION IN EACH PARTITION WITH INSULATION TO ACHIEVE ACUSTIC RATING (STC) AND SEAL ACCORDINGLY.**
- E. TYPICAL FLOOR PLAN DIMENSIONS FOR PARTITIONS ARE TO FINISH FACE OF GYPSUM BOARD OR MASONRY UNLESS NOTED OTHERWISE. MAINTAIN DIMENSION BETWEEN FACE OF FINISHES. PROVIDE FIRESTOPPING AT PENETRATIONS AND CONNECTIONS TO ADJACENT ASSEMBLIES IN FIRE-RATED PARTITIONS COMPLIANT WITH APPLICABLE TESTING AGENCY REQUIREMENTS.**
- F. ALL PENETRATIONS THROUGH FIRE-RESISTANCE RATED PARTITIONS SHALL BE SEALED WITH MATERIALS AND ASSEMBLIES NECESSARY TO MAINTAIN THE REQUIRED RATING OF THE WALL, FLOOR, AND/OR ROOF.**
- G. FIRE AND/OR ACUSTIC TEST REFERENCES CALLED OUT MAY VARY DEPENDING ON THE MANUFACTURER OF COMPONENTS ACTUALLY USED.**
- H. ENSURE FINISH SURFACES ARE FLUSH AND SEAMLESS WHERE PARTITIONS AND/OR FURRING ARE COPLANAR.**
- I. ISOLATE NON-BEARING FRAMING FROM STRUCTURAL ELEMENTS TO PREVENT TRANSFER OF LOADS TO PARTITION FRAMING.**
- J. WALL FRAMING SHALL COORDINATE WITH REQUIRED MECHANICAL, ELECTRICAL, PLUMBING, FIRE PROTECTION, AND OTHER WORK.**
- K. GYPSUM WALL CONTROL JOINTS (C.J.) SHALL BE INSTALLED AT A MAXIMUM 30'-0" O.C. AND AT MAJOR INTERRUPTIONS TO WALL SURFACE, SUCH AS DOORS, WINDOWS, AND EQUIPMENT OPENINGS. SEE ARCHITECTURAL PLANS AND INTERIOR ELEVATIONS FOR ADDITIONAL LOCATIONS REQUIRED.**
- L. RECESSED ITEMS SHALL BE INSTALLED FLUSH WITH PARTITIONS U.N.O. PARTITION DEPTH MUST BE ADJUSTED TO ACCOMMODATE DEPTH OF RECESSED ITEM OR AS DIRECTED BY ARCHITECT.**

EXISTING CONSTRUCTION 000000.X

NEW CONSTRUCTION 000000.X

DIVISION 03 CONCRETE

033000.A	CAST-IN-PLACE CONCRETE
033000.B	SLAB-ON-GRADE
033000.D	EXPANSION FILLER
033000.D	COMPACTED GRAVEL BASE
033000.F	VAPOR RETARDER

DIVISION 04 MASONRY

DIVISION 05 METALS

DIVISION 06 WOOD, PLASTICS + COMPOSITES

062023.E	PLASTIC LAMINATE
062023.H	3/4" PLYWOOD

DIVISION 07 THERMAL + MOISTURE PROTECTION

DIVISION 08 OPENINGS

DIVISION 09 FINISHES

092216.A	3-5/8" METAL STUD
092216.B	7/8" FURRING HAT CHANNEL
092216.C	6" METAL STUD
092216.D	2-1/2" CH STUD
092900.A	5/8" TYPE X GYPSUM BOARD
092900.B	SOUND ATTENUATION BLANKETS
092900.F	1" TYPE X GYPSUM LINER PANEL
092900.G	5/8" TYPE X MOISTURE RESISTANT GYPSUM BOARD

DIVISION 10 SPECIALTIES

DIVISION 11 EQUIPMENT

DIVISION 12 FURNISHINGS

DIVISION 14 CONVEYING EQUIPMENT

DIVISION 22 PLUMBING

DIVISION 23 HVAC

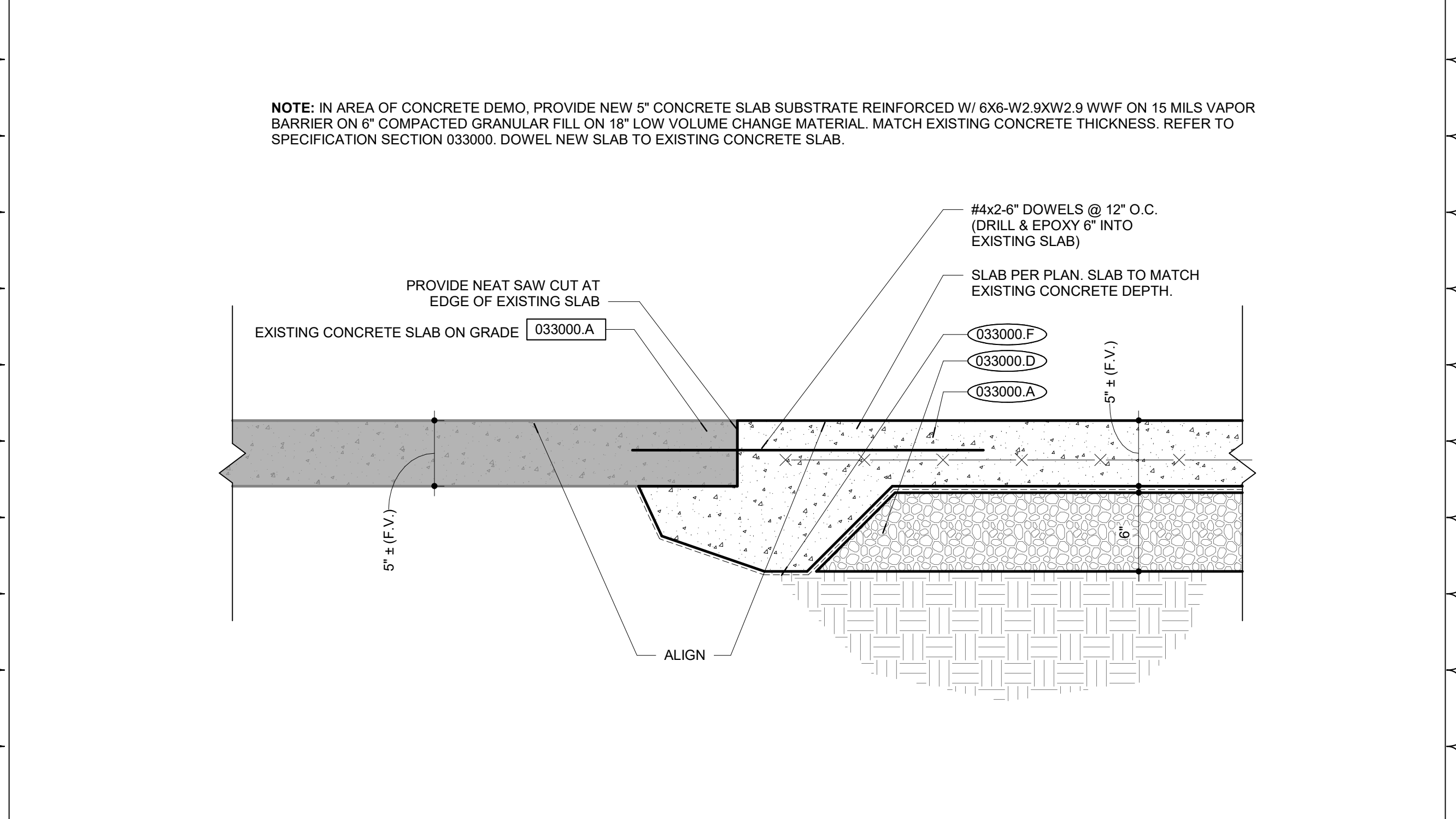
DIVISION 26 ELECTRICAL

DIVISION 31 EARTHWORK

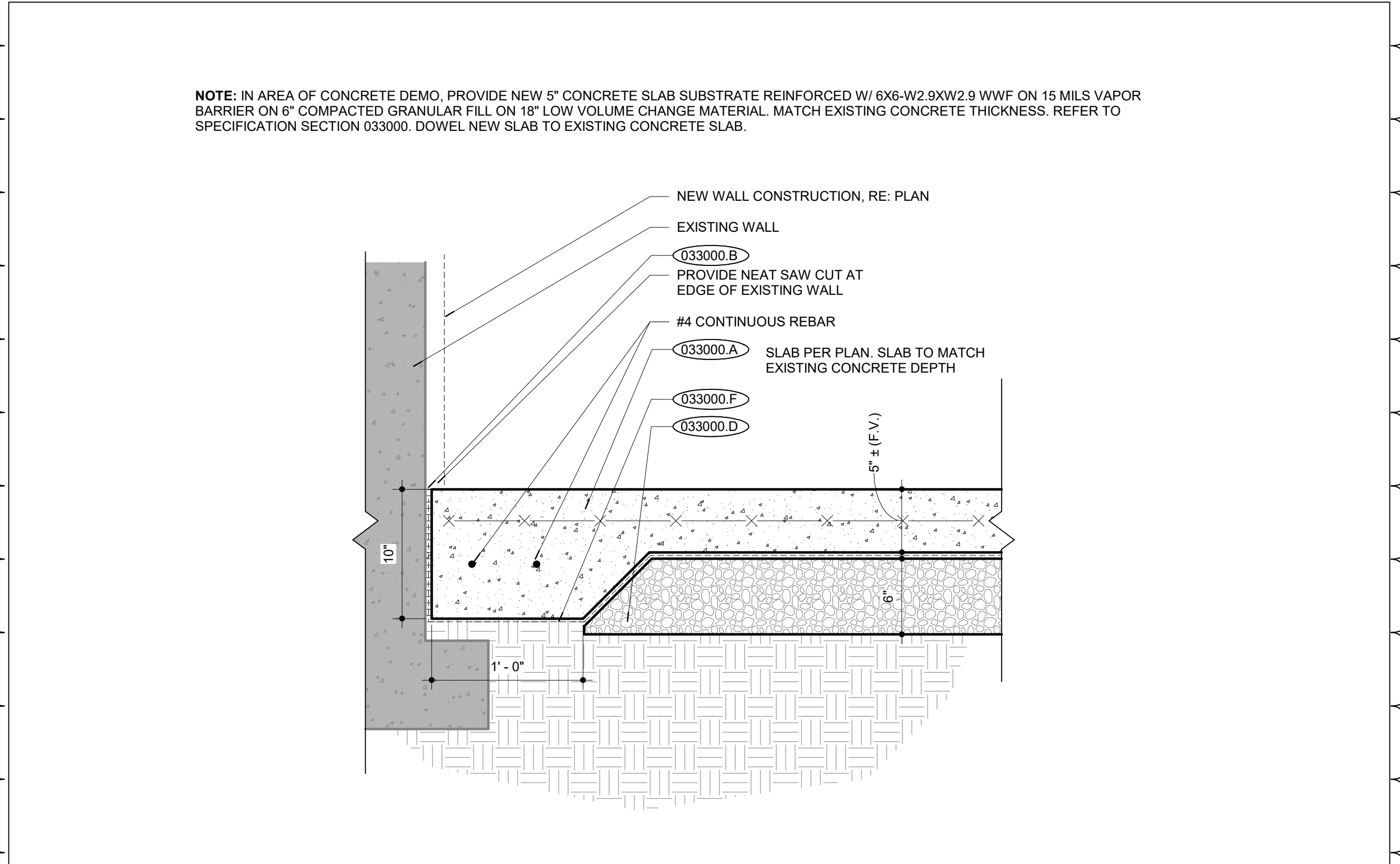
DIVISION 32 EXTERIOR IMPROVEMENTS

- Design No. U415 System A**
Nonbearing Wall Rating — 1 HR.
-
- Floor, Slab and Ceiling Runners** — "J"-shaped runner, 2-1/2 in. wide with unequal legs of 1 in. and 2 in., fabricated from 24 MSG galv steel (min 20 MSG when Item 4A, 4B, 4C, 4D or 7 are used). Runners positioned with short leg toward finished side of wall. Runners attached to structural supports with steel fasteners located not greater than 2 in. from ends and not greater than 24 in. OC.
 - Steel Studs** — "C"-shaped studs, 2-1/2 in. wide by 1-1/2 in. deep, fabricated from 25 MSG galv steel (min 20 MSG when Items 2D, 4A, 4B, 4C, 4D, or 7 is used). Cut to lengths 3/8 to 1/2 in. less than floor to ceiling height and spaced 24 in. or 600 mm OC (max 16 in. OC when Items 4A, 4B, 4C, or 4D are used).
 - Gypsum Board** — Gypsum liner panels, nom 1 in. thick, 24 in. or 600 mm (for metric spacing) wide. Panels cut 1 in. less in length than floor to ceiling height. Vertical edges inserted in "H"-shaped section of "C"-H studs. Free edge of end panels attached to long leg of "J"-runners with 1-5/8 in. long Type S steel screws spaced not greater than 12 in. OC. When wall height exceeds liner panel length, liner panel may be butted to extend to the full height of the wall. Horizontal joints need not be backed by steel framing. Butt joints backed with 6 in. by 22 in. strips of 3/4 in. thick gypsum wallboard (Item 4). Wallboard strips centered over butt joints and secured to liner panels with six 1-1/2 in. long Type G steel screws, three screws along the 22 in. dimension at the top and bottom of the strips.
 - Gypsum Board** — Gypsum panels, with beveled, square or tapered edges, nom 5/8 in. thick, 48 in. or 1200 mm wide, applied vertically or horizontally, attached to studs with 1 in. long Type S steel screws spaced 12 in. when installed vertically or 8 in. OC when installed horizontally. Horizontal joints need not be backed by steel framing.
 - Joint Tape and Compound (Not Shown)** — Joints on outer layers of gypsum boards (Item 4) covered with paper tape and joint compound. Paper tape and joint compound may be omitted when gypsum boards are supplied with square edges. Exposed screw heads covered with joint compound.
 - Batts and Blankets* (Optional)** — Mineral wool or glass fiber batts partially or completely filling stud cavity. Any mineral wool or glass fiber batt mineral bearing the UL Classification Marking as to Fire Resistance.

UL - U415 SYSTEM A - 1 HR | V30

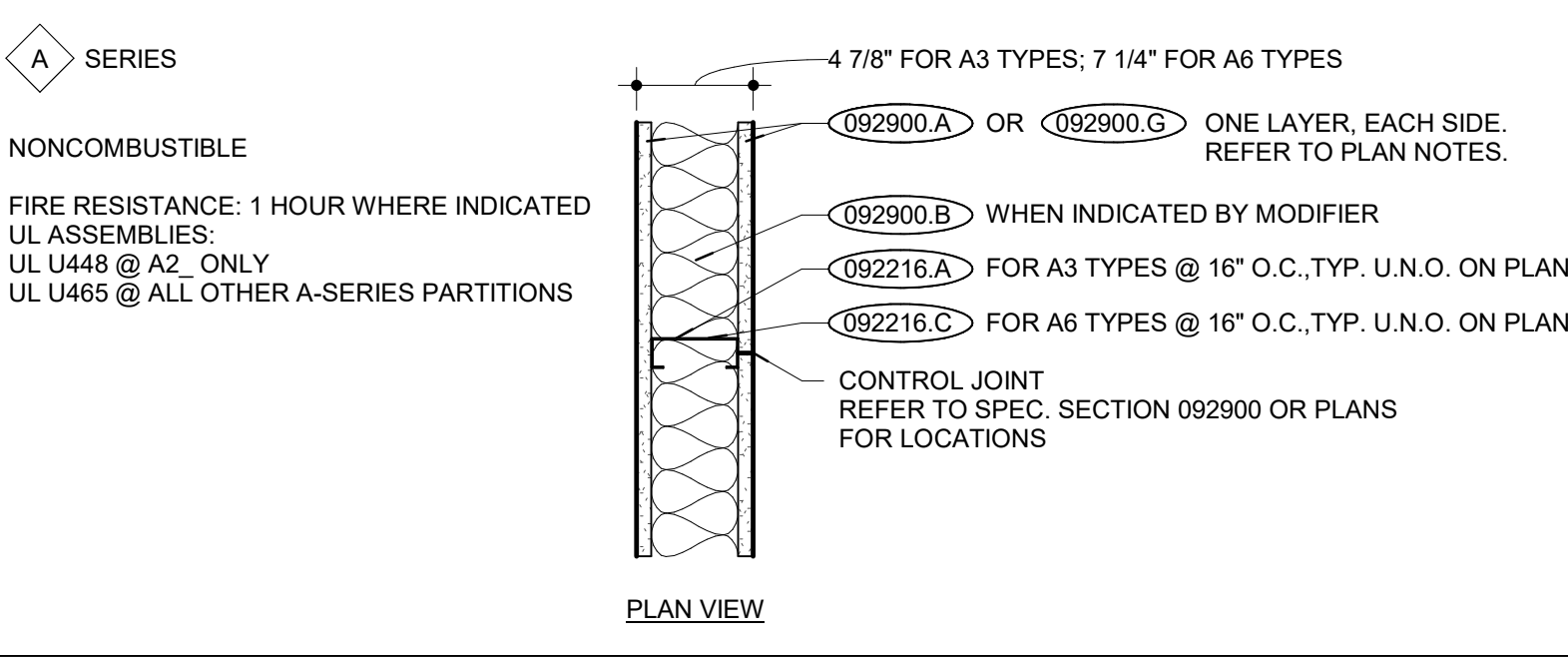


NEW-TO-EXISTING SLAB ON GRADE DTL. | L23

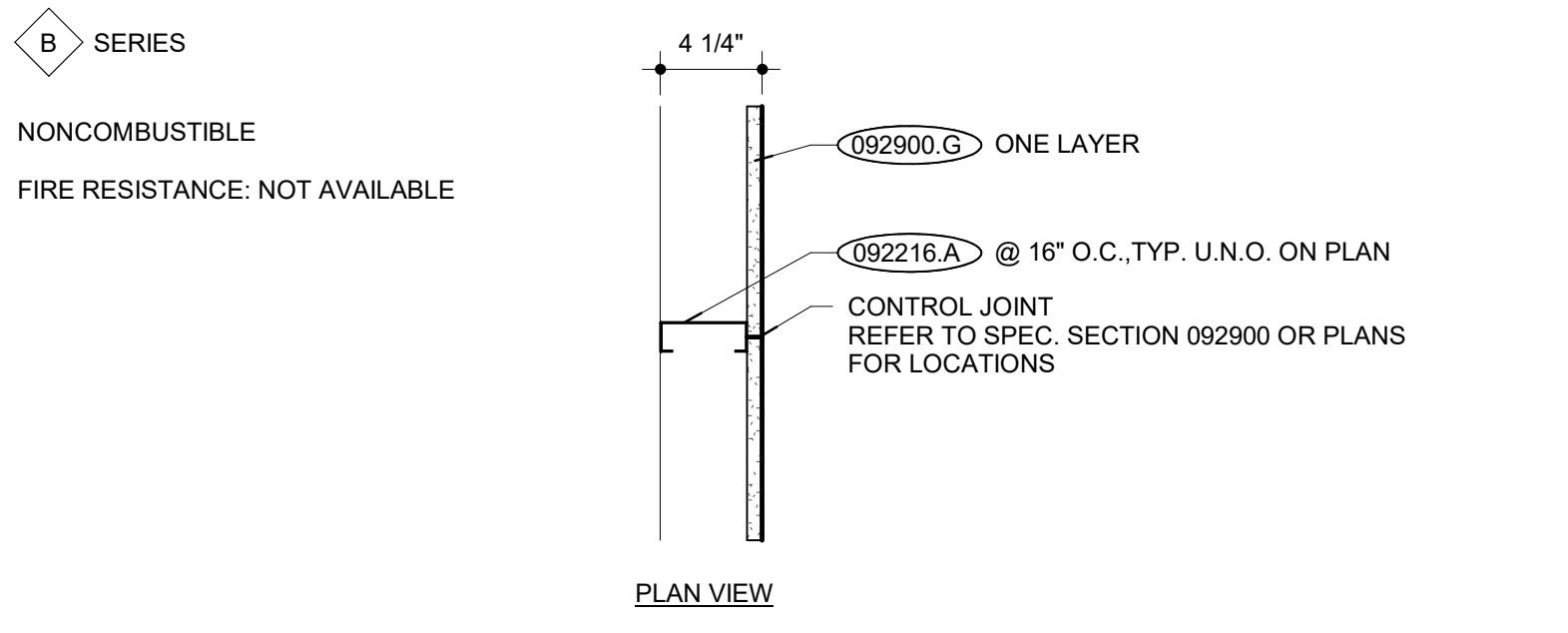


EXISTING WALL TO NEW SLAB ON GRADE DTL. | B23

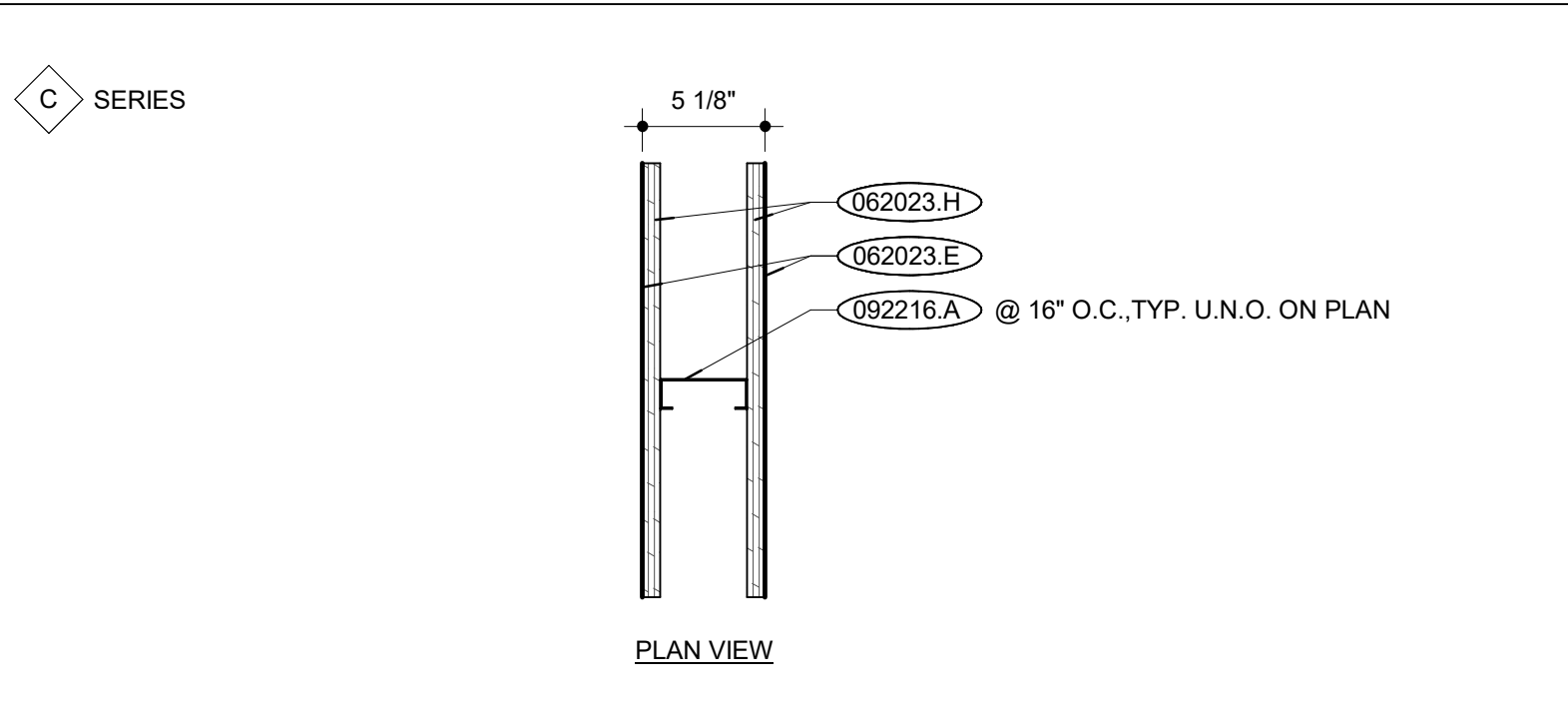
PARTITION MODIFIER KEY | V14



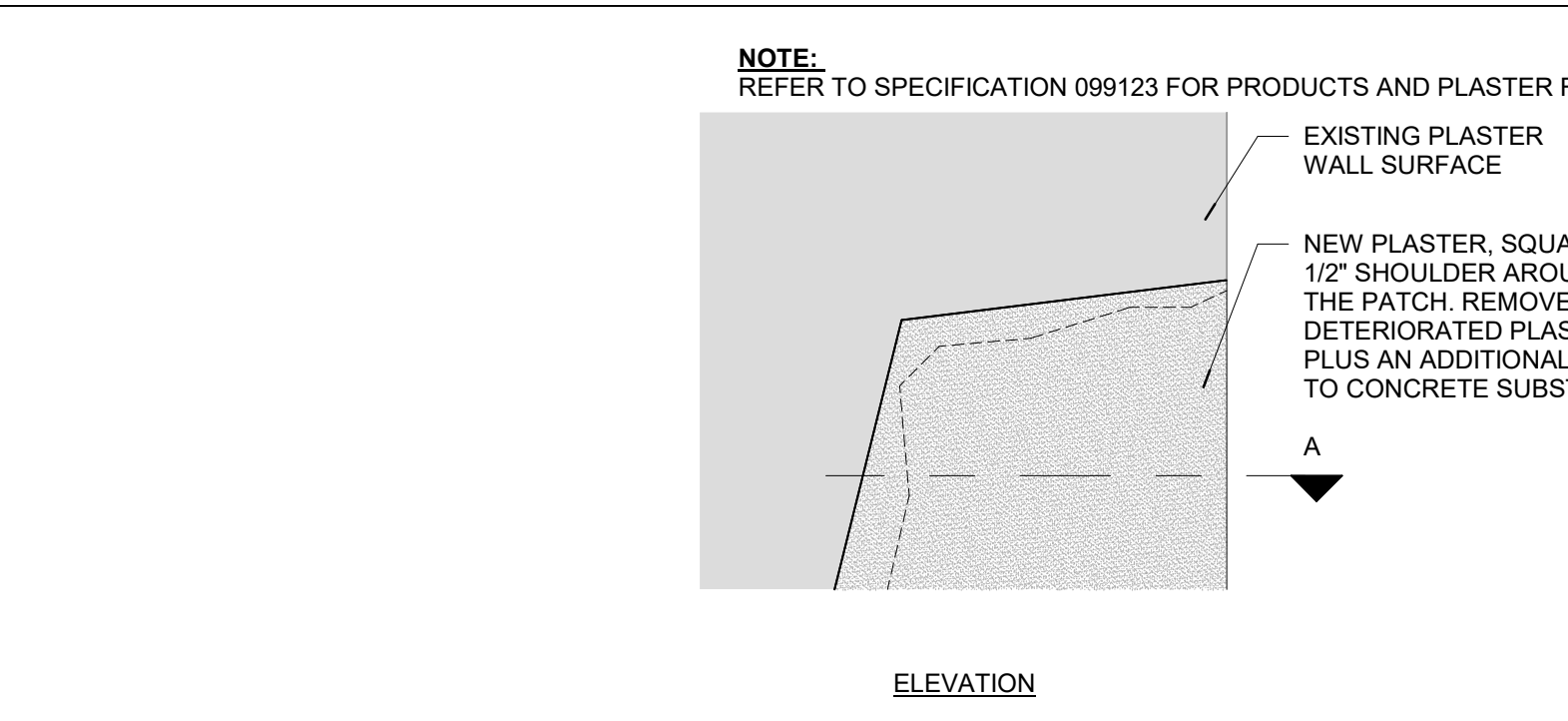
PARTITION TYPE - A SERIES | R14



PARTITION TYPE - B SERIES | L14



PARTITION TYPE - C SERIES | G14

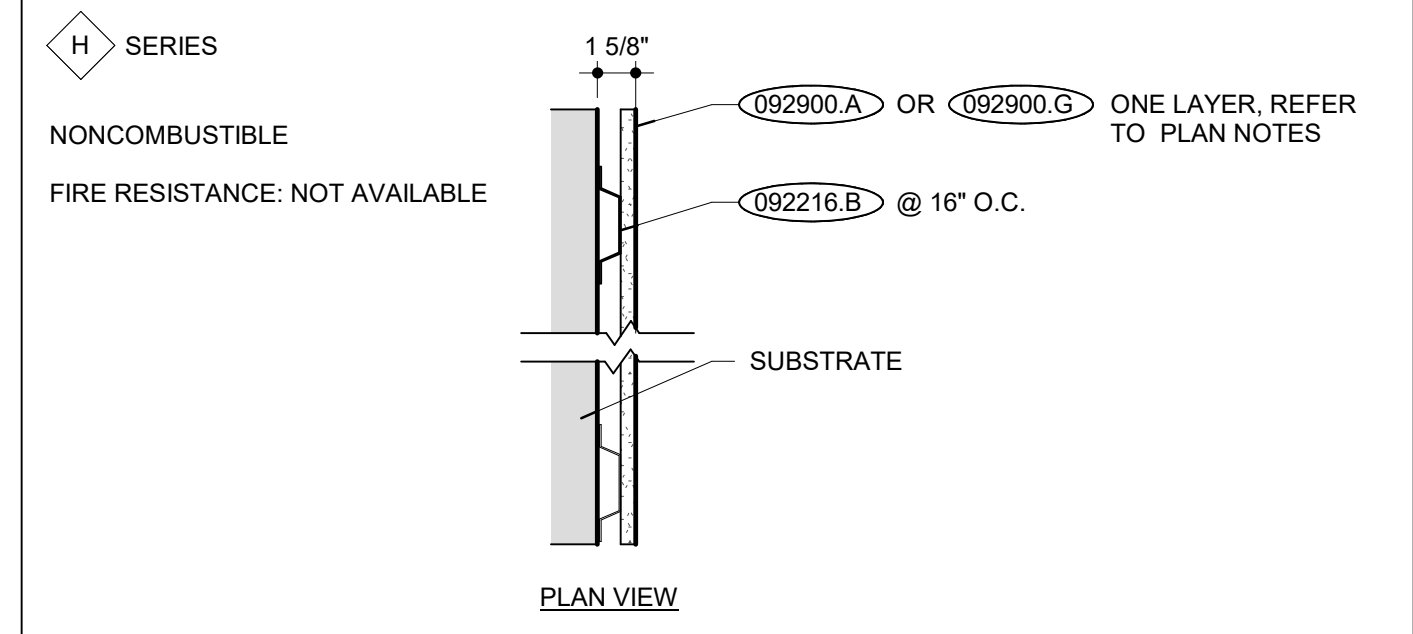


TYP. PLASTER WALL REPAIR | B7

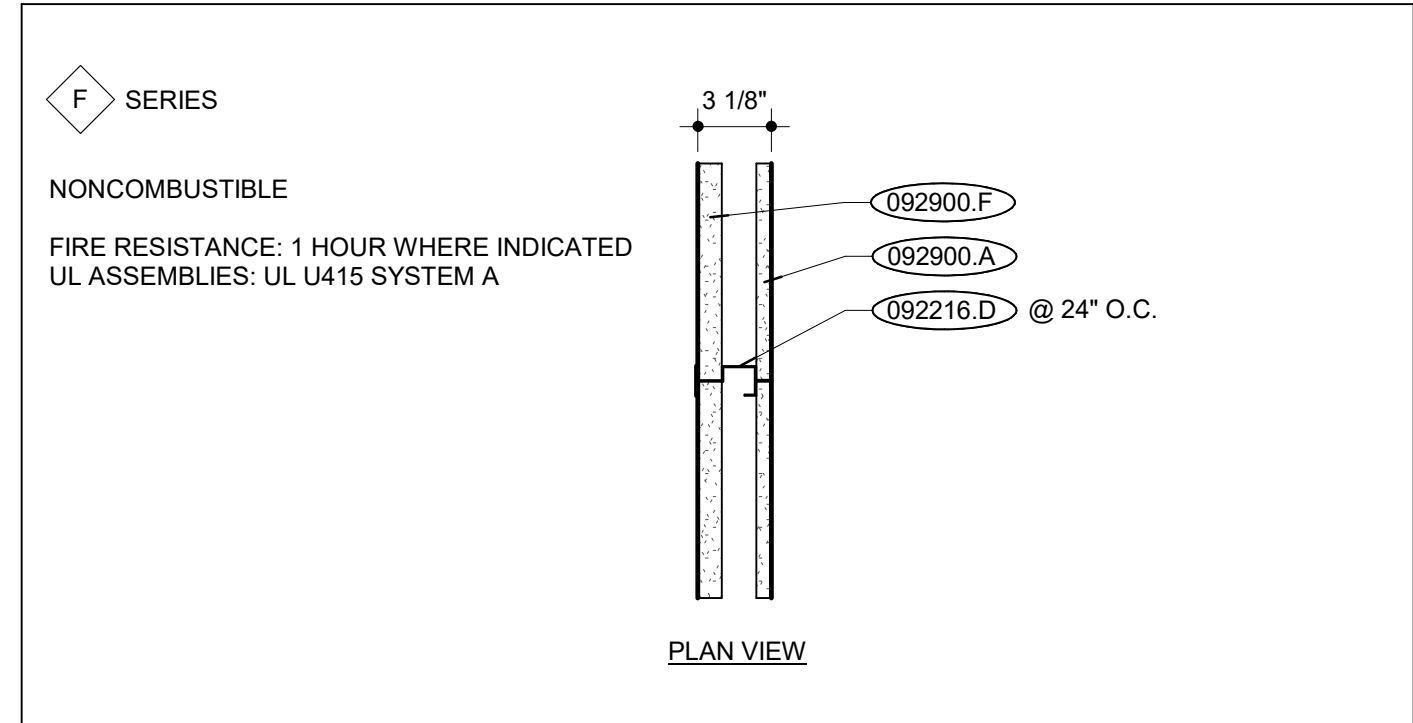
PARTITION NOTES | V7

- 1. SERIES**
THIS CHARACTER DENOTES THE ASSEMBLY SERIES TO WHICH THE WALL BELONGS.
- 2. STUD/MASONRY DESIGNATOR**
THIS CHARACTER DENOTES THE STUD OR FURRING WIDTH. FOR MASONRY, THIS CHARACTER INDICATES NOMINAL UNIT WIDTH.
- 3. MODIFIER**
THIS CHARACTER DENOTES MODIFICATION(S) TO THE SERIES ASSEMBLY. REFER TO THE PARTITION MODIFIER KEY FOR MODIFICATION(S).
- PARTITION NAMING LEGEND**
- A3d**
1. SERIES
2. STUD/MASONRY DESIGNATOR
3. MODIFIER

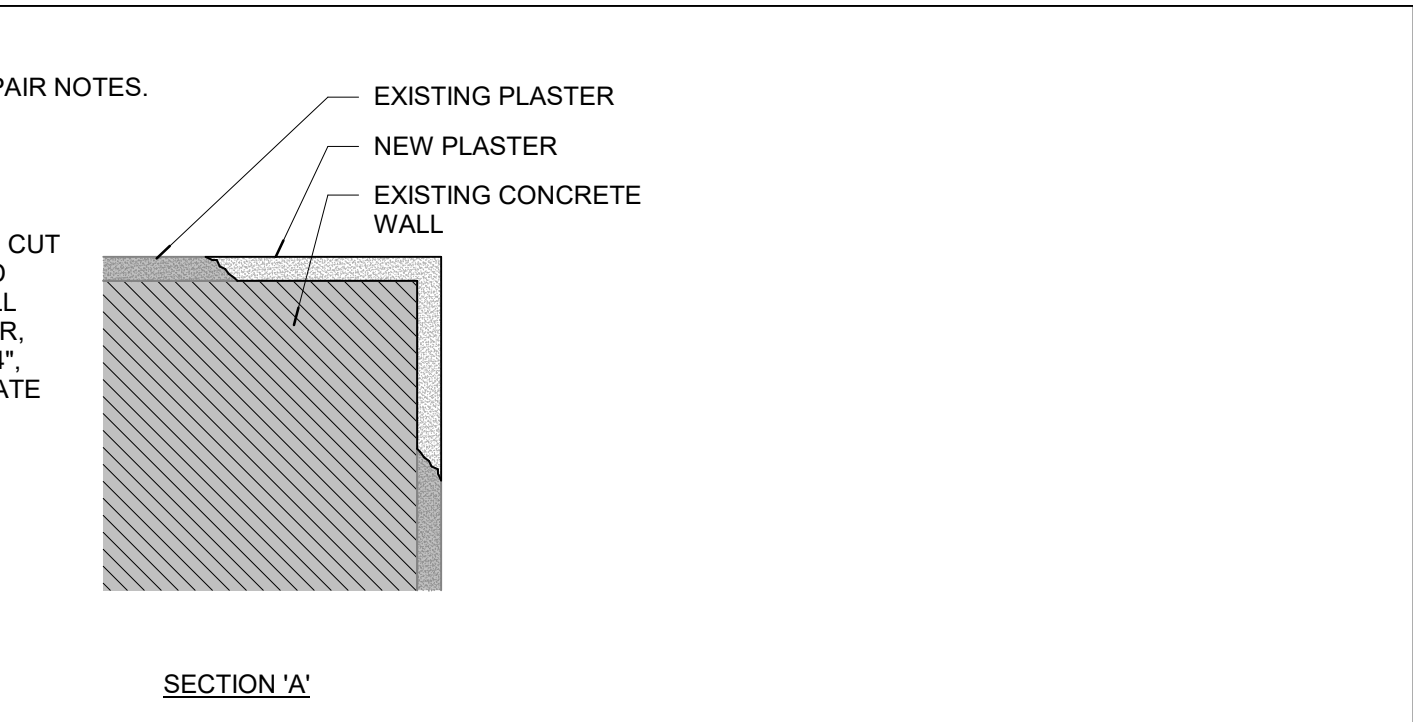
PARTITION NAMING LEGEND | R7



PARTITION TYPE - H SERIES | L7



PARTITION TYPE - F1 | G7



4/11/2025 3:08:25 PM